



Are refugee students being pushed out of school?

R. SCHROEDER



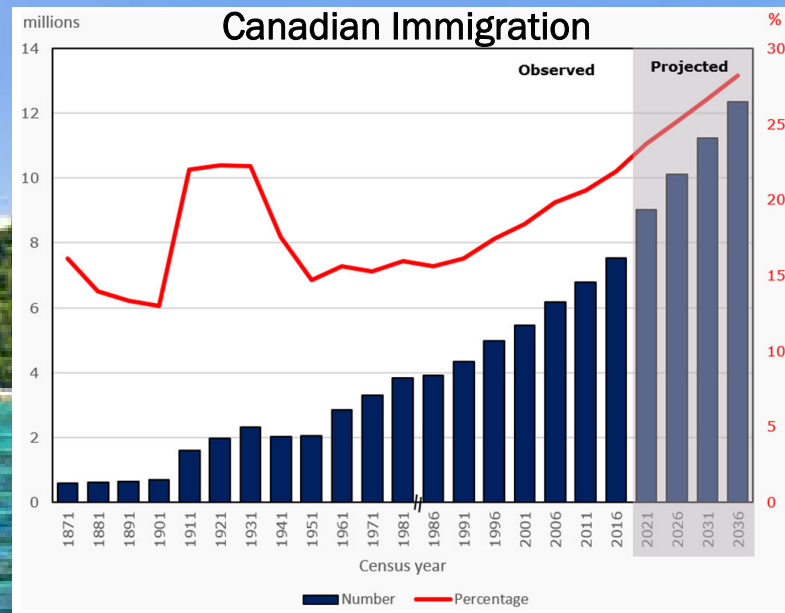
Refugee Education

Have students lost confidence in the value of education?



Purpose

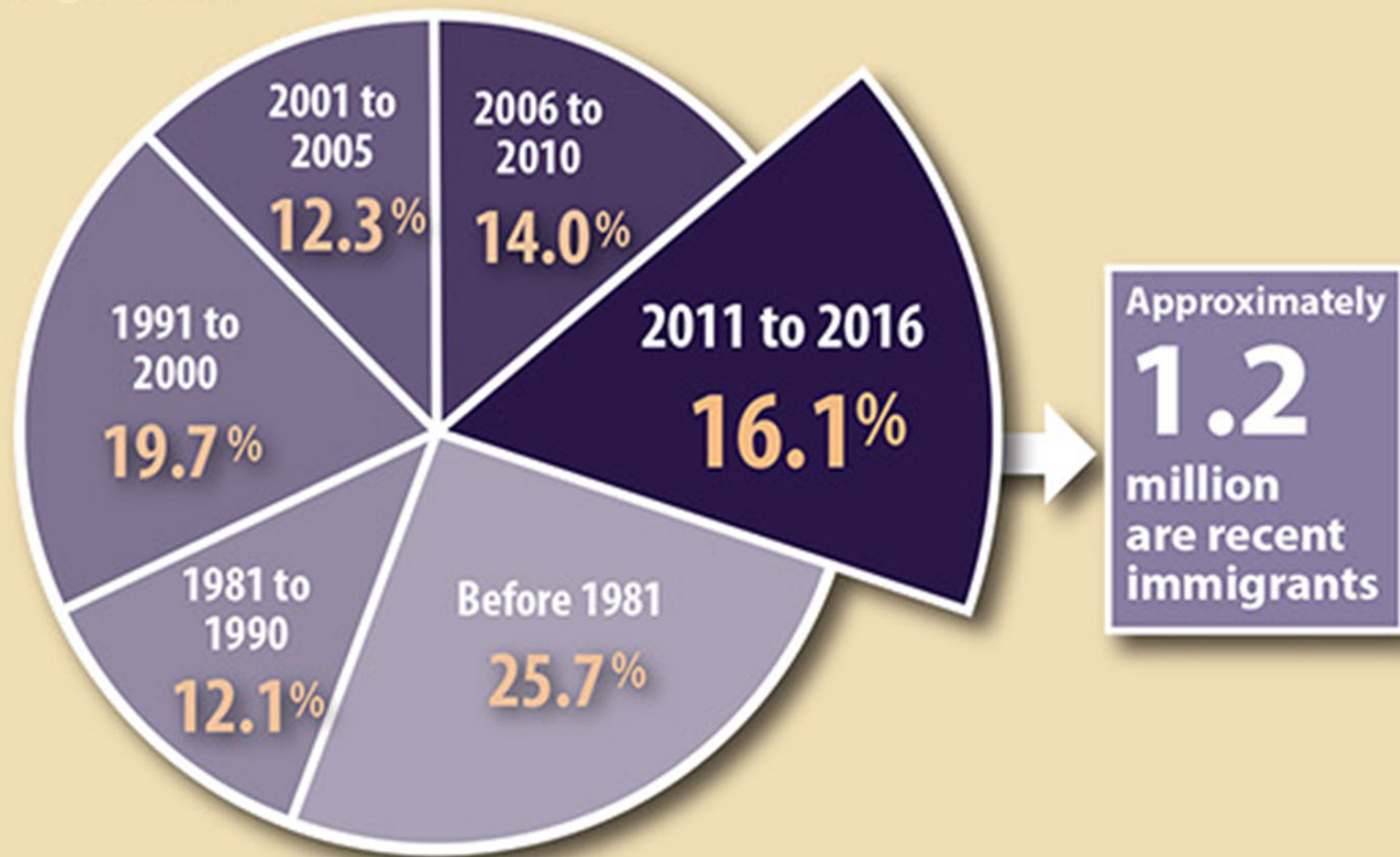
- Pushout
- Intersectional Factors
- Gender



Significance: A Canadian Perspective

- Global refugees highest in recorded history
- Climate crisis to increase forcible displacement
- Canada is positioned to be a global leader in refugee resettlement

Percentage of immigrants to Canada by period of immigration





Ukraine

- 12 million displaced
- 90% women and children
- 41, 000 to resettle in Canada as of April with more to come



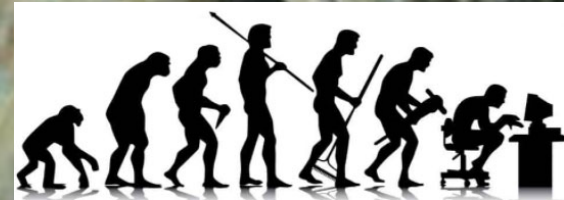
Educational manifesto: Falling through the cracks

- Youth rising up to challenge global leaders for social and climate justice
- Refugee students are being pushed out of school
- Learning equates to change

Guo, S. (2021)

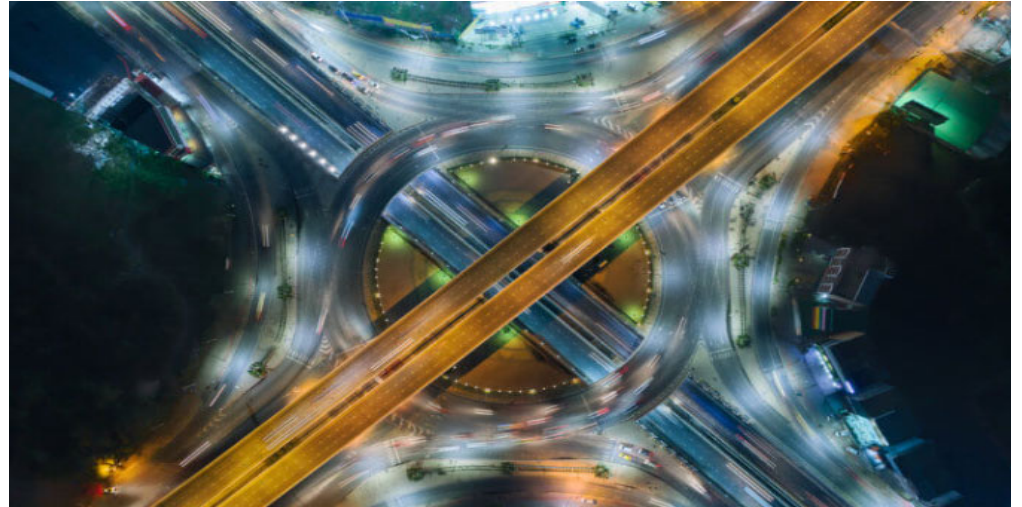
Confronting Social Inequality in Canada

- Broken multiculturalism promises
- Racialized crime
- Discriminatory employment practices
- Educational inequity



Refugee student
integration:
Settlement, education
and psychosocial
support

- Discrimination
- Trauma
- Complex academic and psychological factors
- Neglected intersections of oppression



(2010)

Locating citizenship: Curriculum, social class and the 'good citizen'

- Marginalized youth
- Benefits of education
- Lived experience
- Applicability
- Motivation
- Future participation
- Citizenship and democracy



(2014)

The unexamined
whiteness of
teaching: How white
teachers maintain
and enact dominant
ideologies

- Systemic racism
- White supremacy
- Life experience
- Hegemonic understandings
- Defense mechanisms
- Social reproduction



(2012)

Pipeline to prison

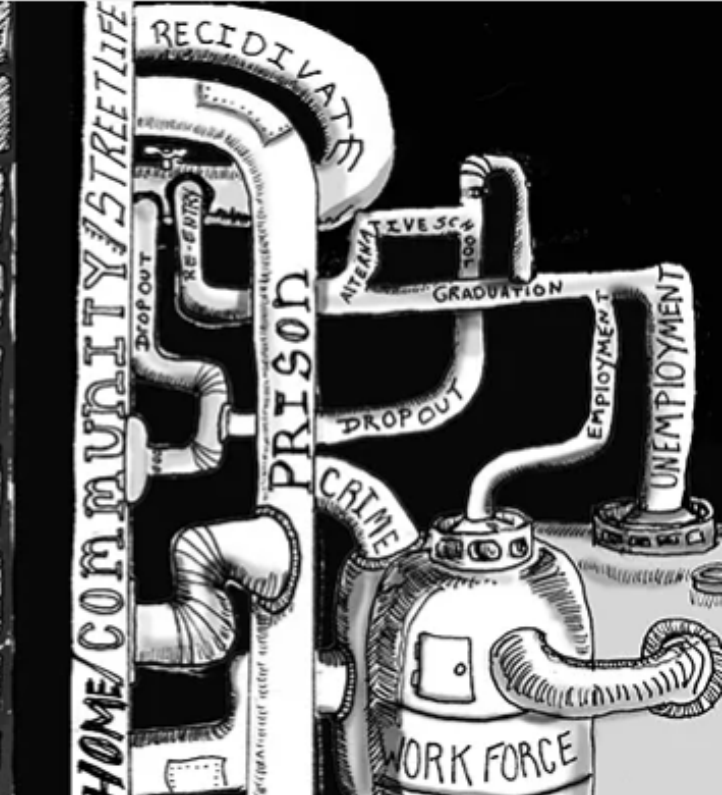
- BIPOC youth
- Racialized representations
- Media and education
- Deviance
- Deficiency
- High rates of incarceration

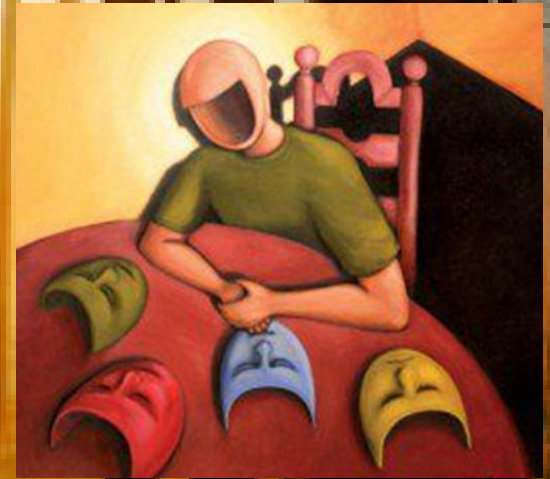
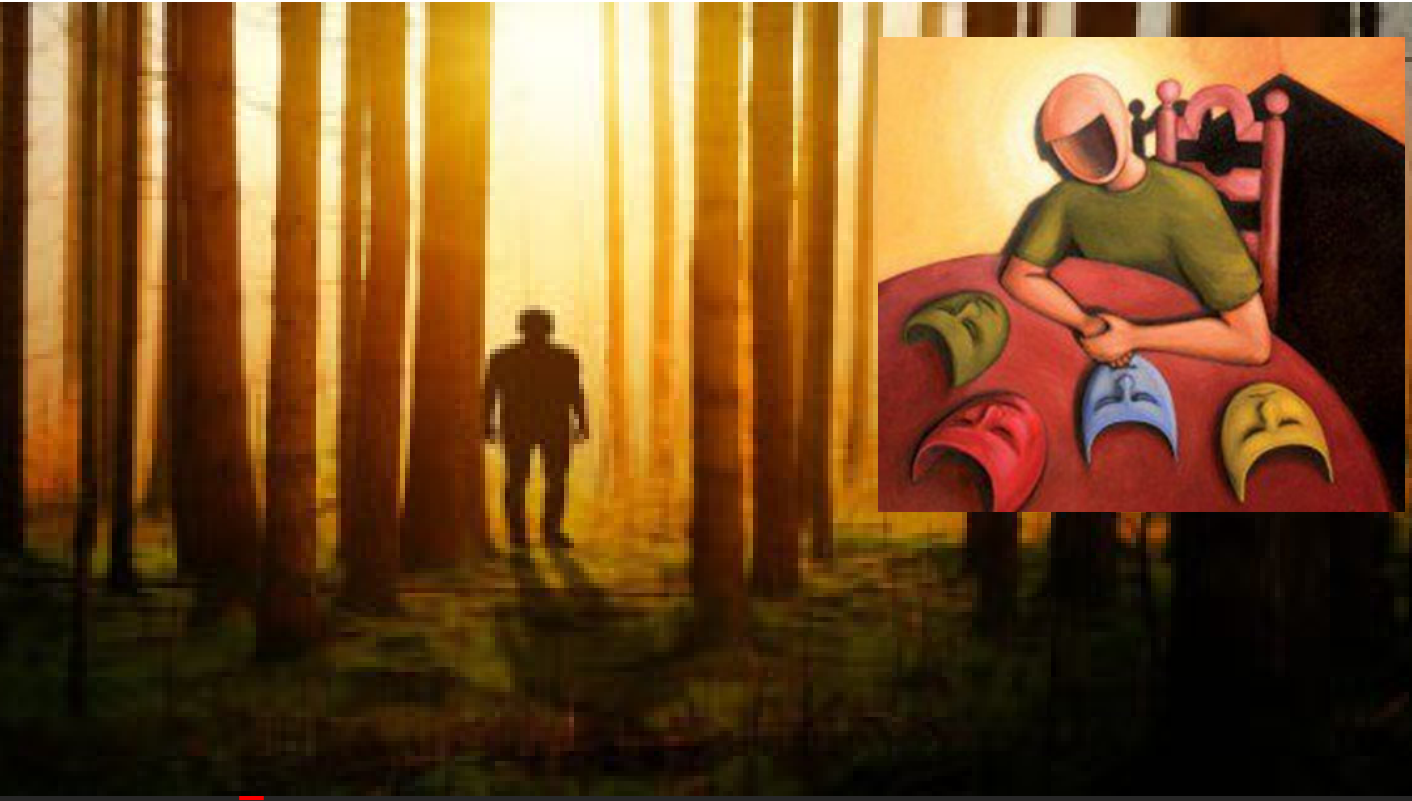


Black students are suspended and expelled

3x

more than white students.³





Education

- Critical Race Theory
- Piaget's theory of cognitive development
- Freudian psychoanalytic theory
- Land- based knowledge systems
- Erikson's theory of human development
- Maslow's hierarchy of needs



Pushout reality

- Pushout
- Early warning sign of danger
- Solve real world problems
- Improve quality of life
- Crisis of confidence
- Value education
- Oppression, risk & investment



Falling through the cracks

Why are refugee students are being pushed out of school?

Some examples we're familiar with:



Employment

Cash strapped students are pulled into the wage labour work force.



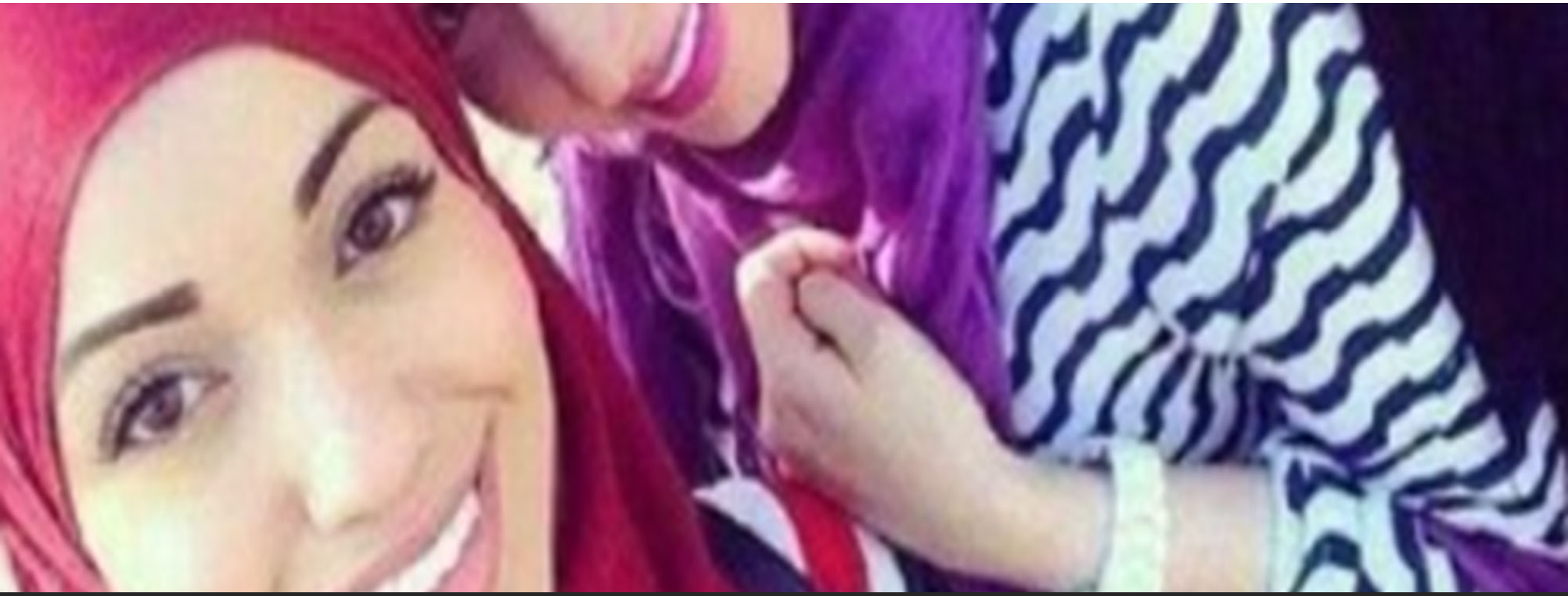
Family

Family roles and expectation require time and attention outside of school.



Bullying

Students of color report high levels of bullying and harassment in school.



Is gender a factor?

Intersectionality

- Identity= Both/ And
- Gender, race, class, sexuality, nationality, religion, ability, and age.
- Black feminist theory
- Kimberlé Crenshaw
- Intersecting and cumulative forms of oppression and discrimination
- For example: racism and sexism

INTERSECTIONALITY a fun guide



Bob is a stripey blue triangle!
AND SHOULD BE PROUD.
yay! me!

SADLY SOME PEOPLE DO NOT LIKE Bob. Bob
FACES OPPRESSION FOR BEING A TRIANGLE, &
FOR HAVING STRIPES.

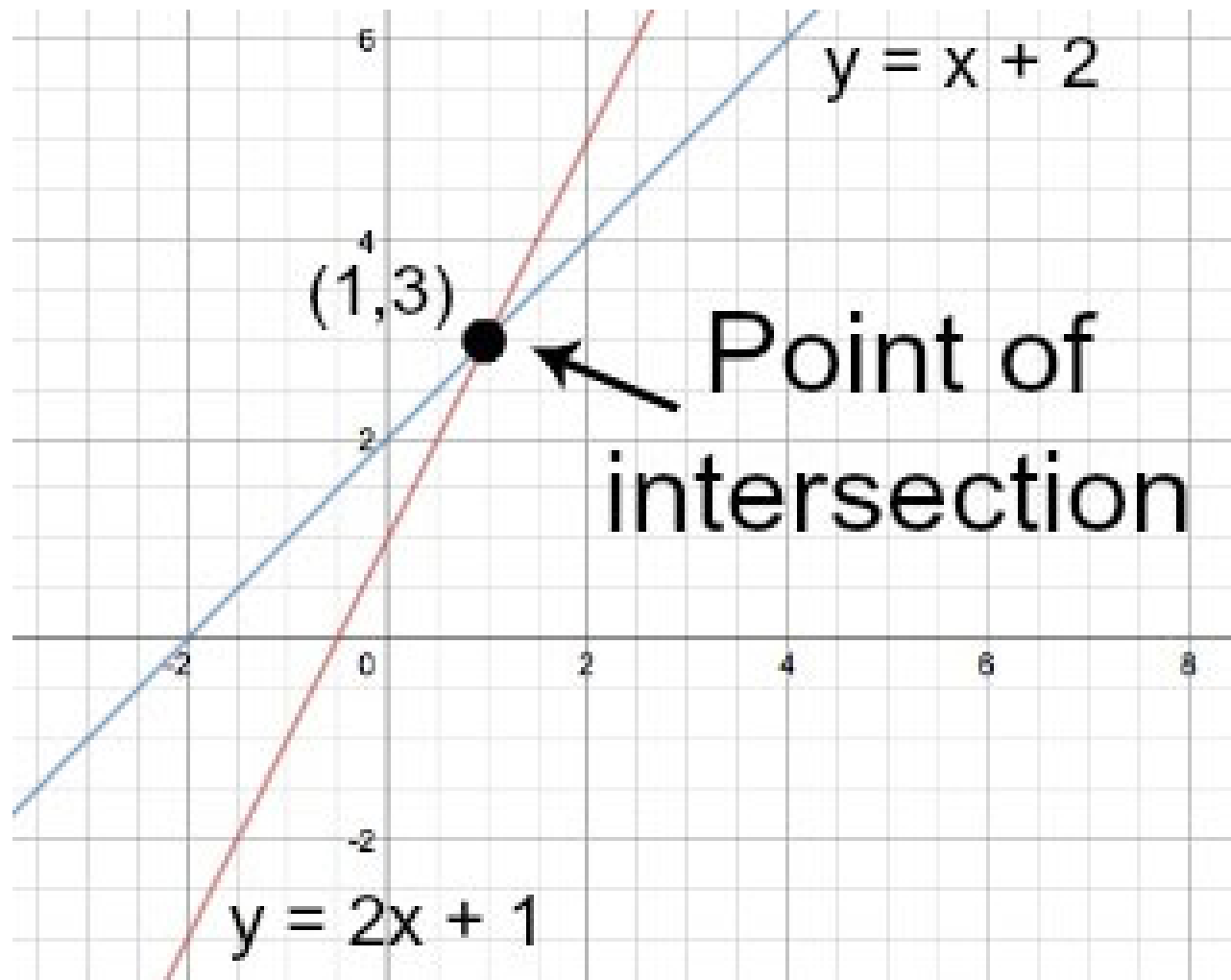
LUCKILY, THERE ARE LIBERATION GROUPS!
BUT THEY AREN'T INTERSECTIONAL.

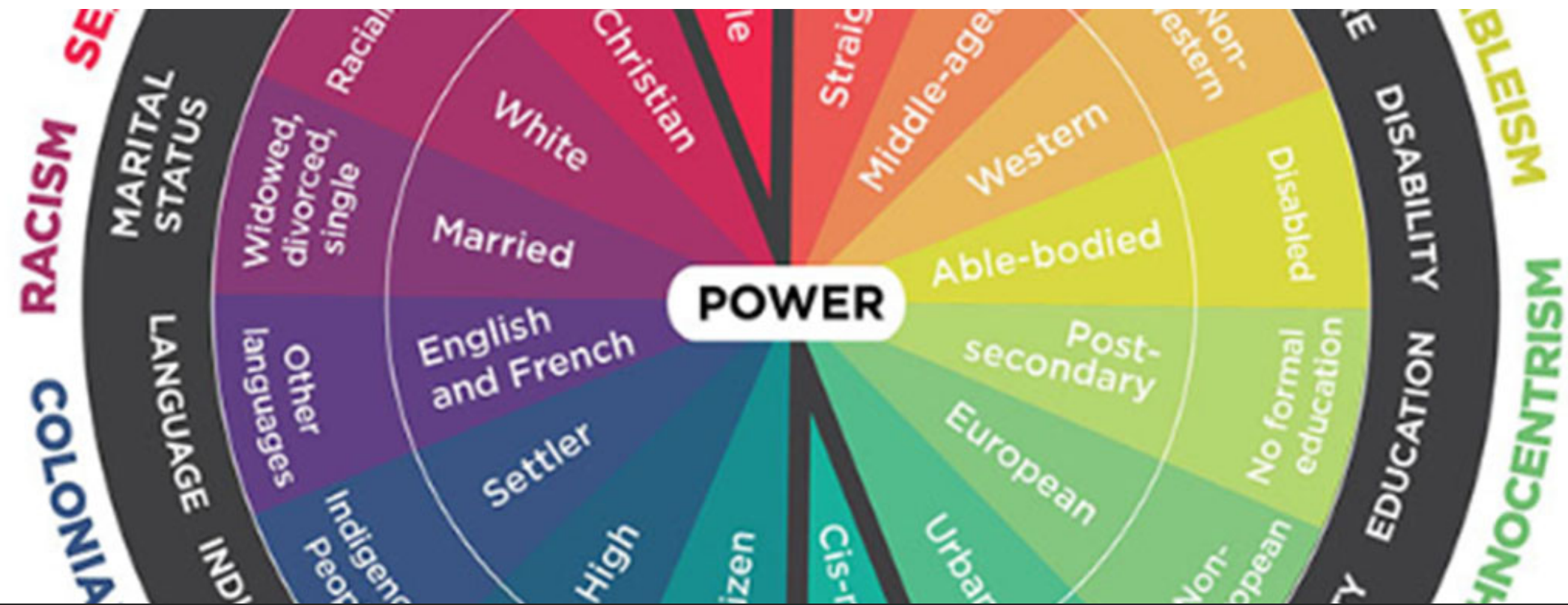
SO THEY
LOOK LIKE
THIS



Intersectionality

- Intersections of axes
- Social location
- Identity and lived experience
- **BOTH** a triangle **AND** stripped **AND** blue





Research question:

To what extent is gender an intersectional factor impacting young adult female refugee student educational trajectory?



Research

Research Methodology

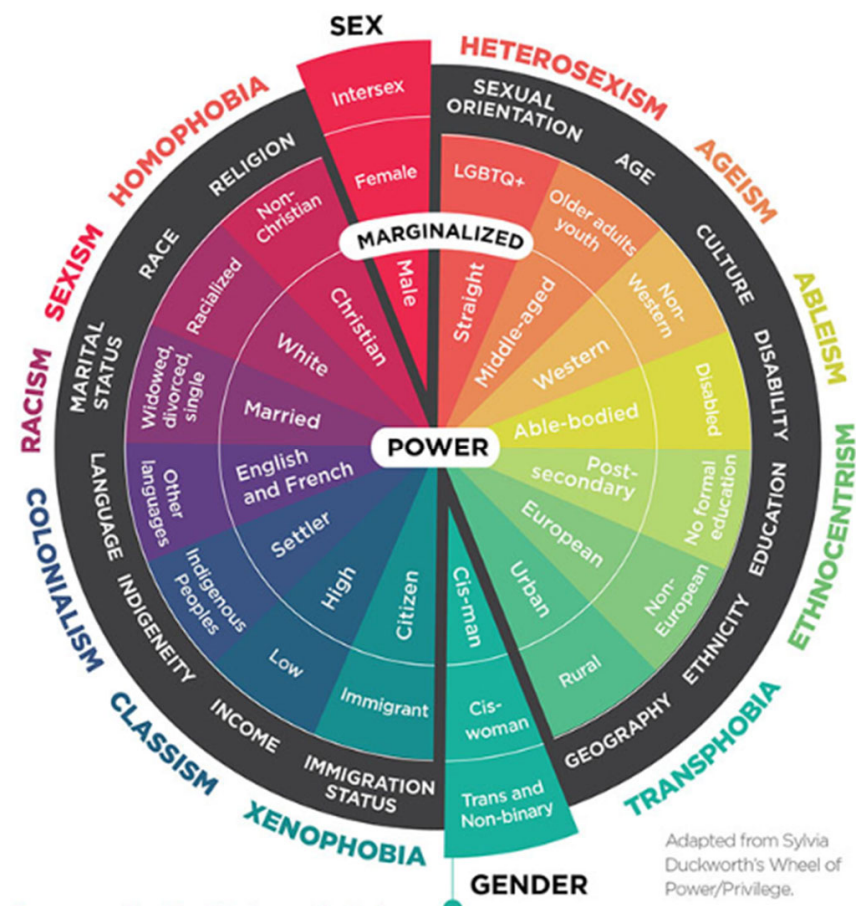
Data Collection

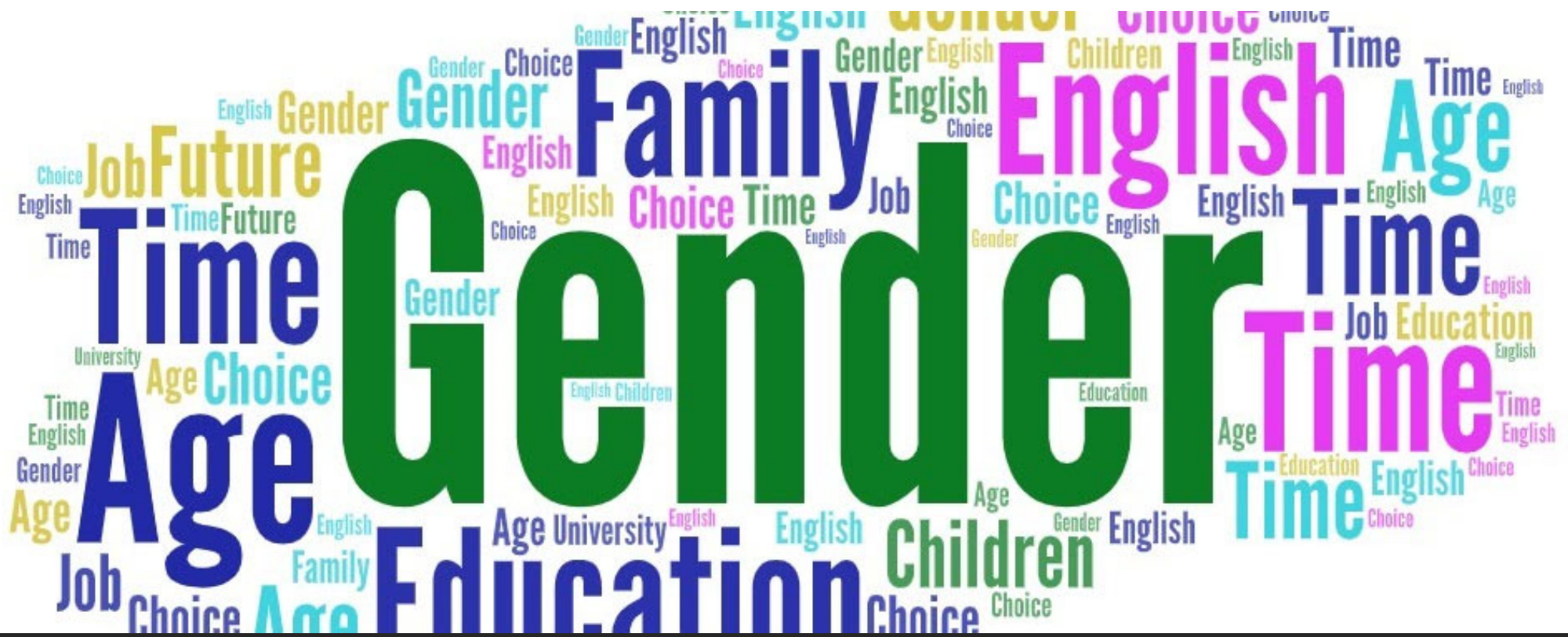
- Interview Canadian scholar in refugee education
- Focus group session
- Teacher interview



Research Instruments

- Circles of Intersectional Self
- Power Flower
- Semi-structured interview questions





Data Analysis

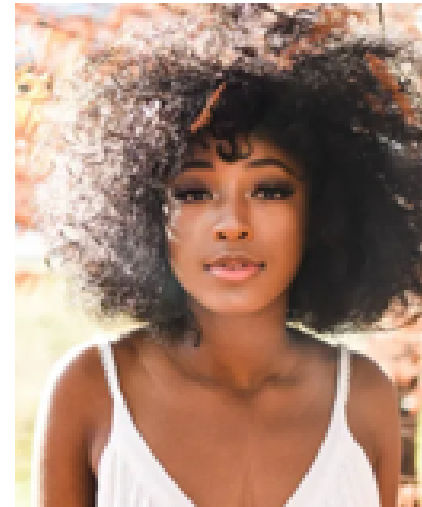
Intersectional Subject Profiles

Mariyam



- Eldest daughter
- Grade 12 high school student
- Refugee status
- Traditional family
- Domestic labour (cleaning/ cooking)
- Only 1 computer at home
- Brother's schoolwork takes priority
- Falling behind at school
- Considered "lazy" by teachers

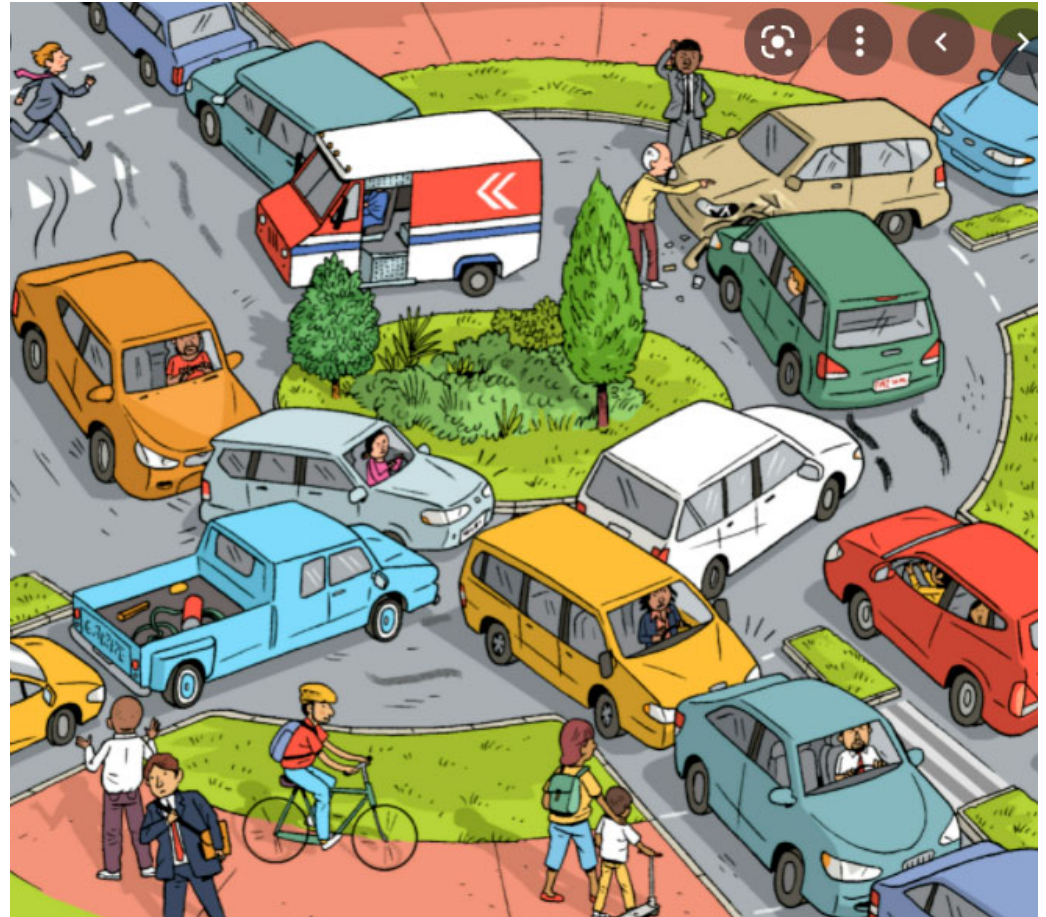
Sam



- Experienced puberty earlier than classmates
- Grade 11 high school student
- Refugee status
- Sexual harassment and bullying caused attendance issues.
- Verbally abused at home for not wearing a hijab
- Left home and found an apartment
- Got a job to pay rent and bills

Neglected Intersection

- Low visibility
- Interlocking
- Complex
- High collision location

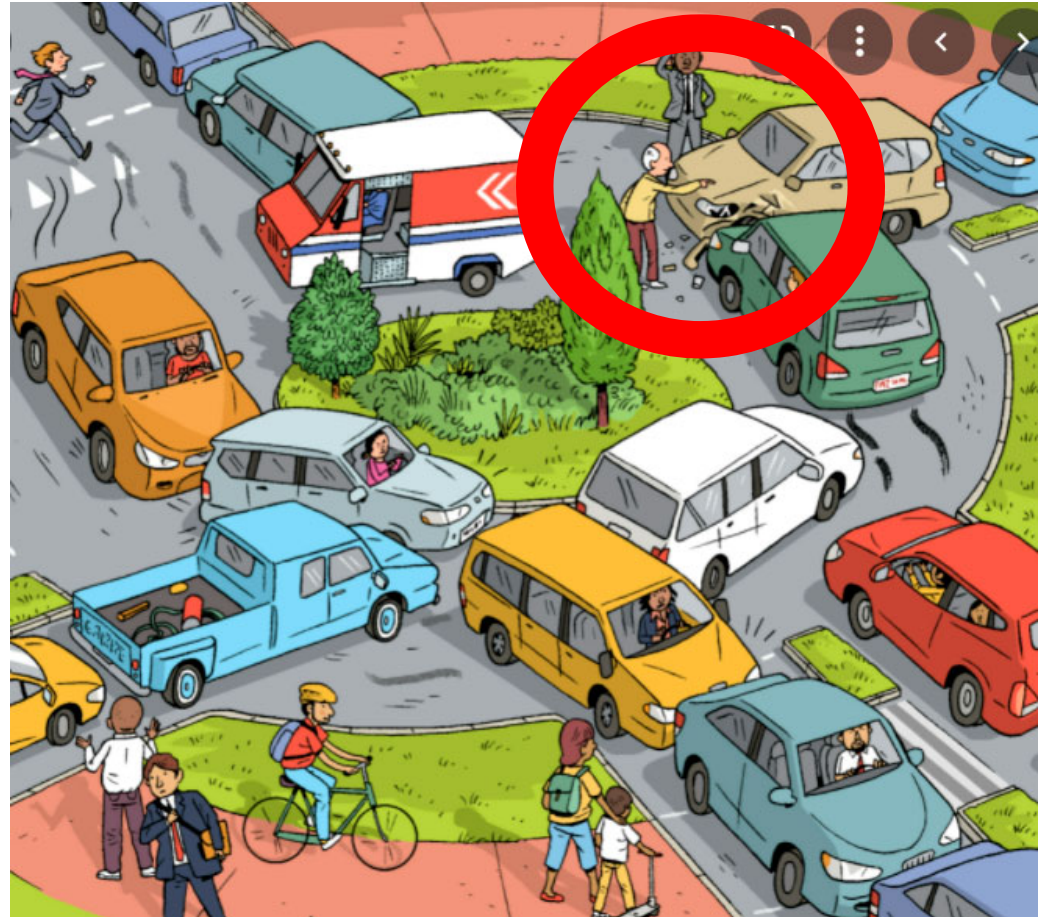


Gender

- Irreducible
- Common
- Critical
- Magnifying



- Irreducible
- Common
- Critical
- Magnifying



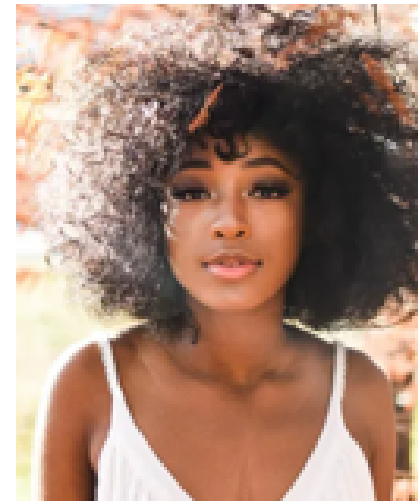
Findings

Mariyam



- Eldest daughter
- Grade 12 high school student
- Refugee status
- Traditional family
- Domestic labour (cleaning/ cooking)
- Only 1 computer at home
- Brother's schoolwork takes priority
- Falling behind at school
- Considered "lazy" by teachers

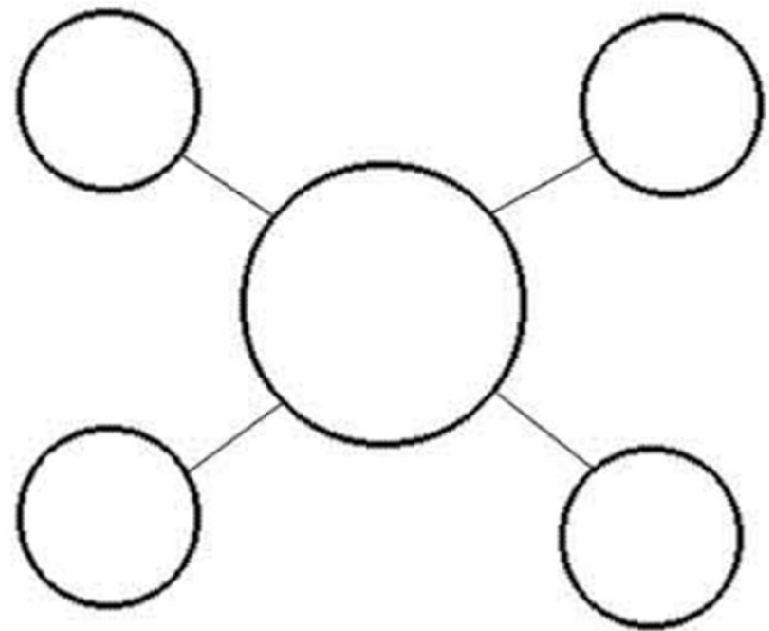
Sam



- Experienced puberty earlier than classmates
- Grade 11 high school student
- Refugee status
- Sexual harassment and bullying caused attendance issues.
- Verbally abused at home for wearing a hijab
- Left home and found an apartment
- Got a job to pay rent and bills

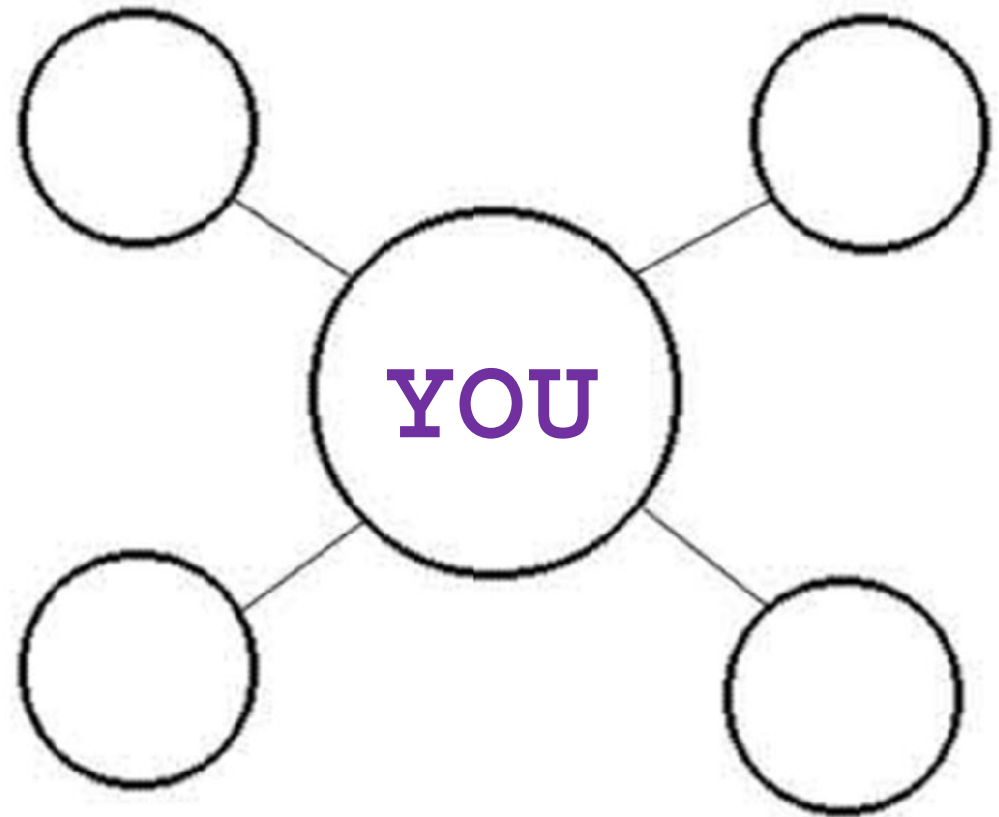
Circles of Intersectional Self

- Self- location
- Power dynamics
- Impacting lived experience
- 2 minutes
- Share with group (optional)



Circles of Intersection nal Self

- What critical intersections represent your identity?



- What has been your experience with **student** *pushout*?
- What **factors** do you think are most significant?
- How do see **gender** as impacting *pushout*?
- Are there **other factors** that haven't been discussed such as mental health, unresolved trauma, or acculturation?
- How does **gender** impact **your lived experience**?
- What are we doing **right** in education today?
- What **supports** are impacting youth to mitigate *pushout*?
- What **changes** need to be made?
- Final thoughts?

Discussion Questions:

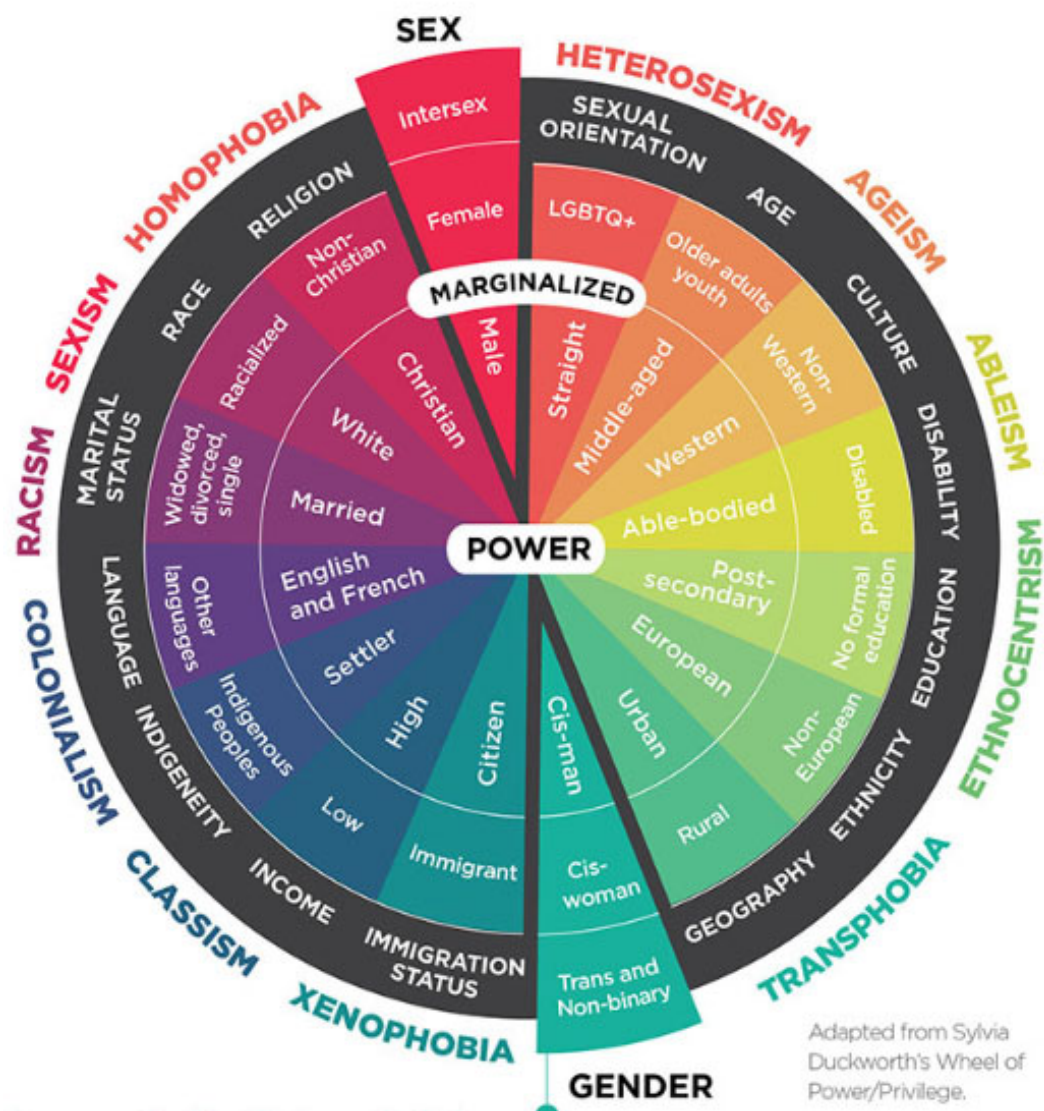
You're Invited!

1. Professional focus group

- Continue the conversation
- 1 hour sharing professional stories and lived experience on the topic

2. Workshop session:

- Co-presenting: Sara Alonso
- Practical tools and strategies
- Anti-discrimination response training
- Theater of the oppressed
- Engaging in anti-oppressive practices
 - Daily life
 - Classroom



You're Invited!

Professional focus group:

- Continue the conversation
- 1 hour
- Sharing professional stories and lived experience on the topic
- Influence policy and practice
- Email:

Rebecca.Schroeder@usask.ca

